

INTRODUCTION TO THE **01-series** 35mm



ST 3511

ST3511 - 2 plate

- Strong, rigid steel chassis scratch resistant paint. Transport castors.
- Solvent resistant table top. Well arranged controls.
- All metal parts corrosion protected. Self lubricating bearings.
- Easy access for maintenance.
- Electronic drive system, crystal controlled.
- Adjustable film tension.
- Operating voltage selectable from 100 – 240 Volts / 50/60 Hz.
- Power consumption: 800 W.
- Two image systems, selectable by user: Academy (standard), cinemascope (optional). Other formats like S35 or Widescreen on request.
- Ground glass back-illuminated.
- Multipurpose processor counter display, monitoring all stages of counting: time – length (meters / feet) - frames and converts every count into another.

Configuration

- Track 1: standard picture COMOPT 35mm sound (mono).
- Friendly film handling.
- Maximum capacity of 650 meter / 2000 feet of Acetate film on bobbins.



Pictre system

- Optical compensation with 18 face revolving prism.
- Very brilliant, bright (170 lux) and sharp (>80 lines/mm picture).
- Excellent picture steadiness (<0,5%)
- Framing at standstill and during operation.
- Lamp 12 Volts / 100 Watt / high quality very bright projection screen.
- Lamp is automatically dimmed in standstill to protect the film from heat.
- Lamp is easily accessible and can be adjusted from the (top) working plate in three ways to get the maximum light quality.
- Projection system with highly polished surface mirrors.
- Special condenser system with heat absorbing filter.
- Projection areas: standard 212 x 298mm.
Other formats like Cinemascope, 1:1,85, Super35 etc. all optional up to 212 x 500mm.
- Large projection housing with flexible masks and universal counter.
- (video) camera adaptor system (optional)

Drive system

- Well proven one motor drive system with belt driven frictions with adjustable film tension.
- Adjustable time for acceleration and deceleration for maximum safe film handling.
- Sync speeds 24/25 f.p.s. (frames per second) - variable wind speed from 0 to 100 f.p.s.
- Changing 35mm sprocket and sprocket ring for shrunken material is possible (optional).
- Variable speed control from 0 – 100 f.p.s. including display for an exact read-out film speed. (optional)

Audio system

- Two way high quality loudspeakers, nominal 2 x 30 Watt.
- Balanced XLR mono +4Db output (optional).
- Faders for each sound channel.
- Master amplifier for volume, treble and bass
- Headphone socket. (1/4" jack)
- Automatic muting at high speed.
- White (standard) and red light (optional) COMOPT, changeable by user.
- Frequency response: COMOPT 40 – 8.000 Hz within ± 3 Db.
- Signal-to-noise ratio: COMOPT 58 Db.
- Wow and Flutter, linear <0,3%.



ST170/177



ST200

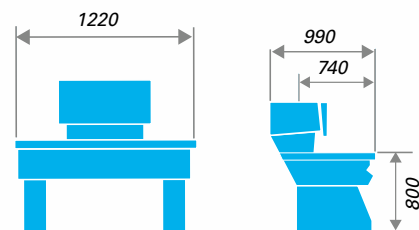
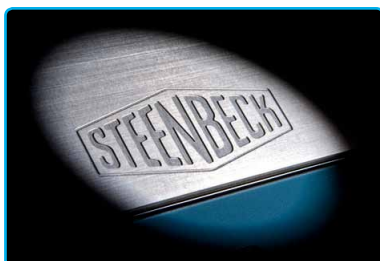


Options

ST57	Table working lamp with dimmer	N
ST59	Foot switch with control board	F
ST62	COMOPT 35mm red light / Cyan optical sound reader	N
ST92	Cinemascope	F
ST99/35/1	Service kit for shrunken 35mm film 1,0% - 1,5%	N
ST99/35/2	Service kit for shrunken 35mm film 1,5% - 2,5%	N
ST171	(video) camera adaptor system for digitizing (standard) 35mm with special optics, without camera*	F
ST173	(video) camera adaptor system for digitizing 35mm, Cinemascope and other formats with special optics, without camera*	F
ST168	(video) camera condenser 35mm with integrated mirror lamp for ST171/173.	N
ST191	Extension board (right)	N
ST192	Extension board (left)	N
ST200	Variable speed control, including display	F
ST2290	Balanced audio output 2-channels (mono)	F
Z50	Time elapsed counter	F

Other options and customer specifications: on request.

*N = extendable by user or service engineer, F = factory installation only, * = only with camera, advised/installed by Steenbeck*



Weight: 150 kg. Measurement in mm.

More than 60 years of film table precision



Keizersveld 31
5803 AM Venray (Holland)
Email: info@steenbeck.com

Tel.: + 31 (0) 478 630300
Fax: + 31 (0) 478 690007
www.steenbeck.com