

INTRODUCTION TO THE **01-series** 35mm



ST 1401

ST1401 (401) - 4 plate

- Strong, rigid steel chassis, scratch resistant paint. Transport castors.
- Solvent resistant table top. Well arranged controls.
- All metal parts corrosion protected. Self lubricating bearings.
- Easy access for maintenance.
- Electronic drive system, crystal controlled.
- Adjustable film tension.
- Operating voltage selectable from 100 – 240 Volts / 50/60 Hz.
- Power consumption: 800 W.

Automatic lock of disengaged tracks against offset motion.

- Friendly film handling.
- Maximum capacity of 650 meter / 2000 feet of Acetate film/PE sound film on bobbins.

Configuration

- Track 1: standard picture COMOPT 35mm sound (mono)
 - Track 2: magnetic sound SEPMAG, centre track (mono)
- All tracks individually disengageable.



- Two image systems, selectable by user:
Academy (standard), cinemascope (optional).
Other formats like S35 or Widescreen on request.
- Ground glass back-illuminated.
- Multipurpose processor counter display, monitoring all stages of counting: time – length (meters / feet) - frames and converts every count into another.

Picture system

- Optical compensation with 18 face revolving prism.
- Very brilliant, bright (170 lux) and sharp (>80 lines/mm picture).
- Excellent picture steadiness (<0,5%).
- Framing at stand-still and during operation.
- Lamp 12 Volts / 100 Watt / high quality very bright projection screen.
- Lamp is automatically dimmed in standstill to protect the film from heat.
- Lamp is easily accessible and can be adjusted from the (top) working plate in three ways to get the maximum light quality.
- Projection system with highly polished surface mirrors.
- Special condenser system with heat absorbing filter.
- Projection areas: standard 212 x 298mm
Other formats like Cinemascope, 1:1,85, Super35 etc. all optional up to 212 x 500mm.
- Large projection housing with flexible masks and universal counter.
- (video) camera adaptor system (optional).

Drive system

- Well proven one motor drive system with belt driven frictions with adjustable film tension.
- Adjustable time for acceleration and deceleration for maximum safe film handling.
- Sync speeds 24/25 f.p.s. (frames per second) - variable wind speed from 0 to 100 f.p.s.
- Changing 35mm sprocket and sprocket ring for shrunken material is possible (optional).
- Variable speed control from 0 – 100 f.p.s. including display for an exact read-out film speed. (optional)

Audio system

- Two way high quality loudspeakers, nominal 2 x 30 Watt.
- Balanced XLR mono +4Db output (optional).
- Faders for each sound channel .
- Master amplifier for volume, treble and bass.
- Headphone socket. (1/4" jack).
- Automatic muting at high speed.
- White (standard) and red light (optional) COMOPT, changeable by user.
- Frequency response:
COMOPT 40 – 8.000 Hz within ± 3 Db.
SEPMAG 40 – 12.500 Hz within ± 2 Db
- Signal-to-noise ratio: COMOPT 58Db.
SEPMAG 48Db.
- Wow and Flutter, linear <0,3%.
- Multi channel SEPMAG heads: on request.



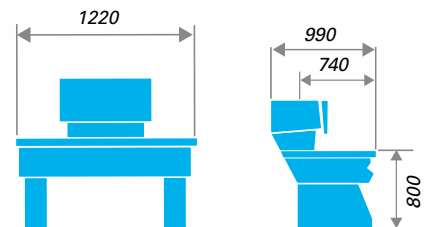
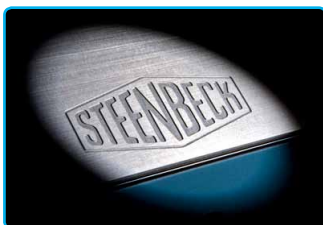
ST200



ST170/177



Options		
ST57	Table working lamp with dimmer	N
ST59	Foot switch with control board	F
ST62	COMOPT 16mm red light / Cyan optical sound reader	N
ST68	SEPOPT 35mm (optical sound head), with pre-amp	F
ST92	Cinemascope	F
ST99/35/1	Service kit for shrunken 35mm film 1,0% - 1,5%	N
ST99/35/2	Service kit for shrunken 35mm film 1,5% - 2,5%.	F
ST171	(video) camera adaptor system for digitizing (standard) 35mm with special optics, without camera*	F
ST173	(video) camera adaptor system for digitizing 35mm, Cinemascope and other formats with special optics, without camera*	N
ST168	(video) camera condenser 35mm with integrated mirror lamp for ST171/173	N
ST191	Extension board (right)	N
ST192	Extension board (left)	N
ST200	Variable speed control, including display	F
ST740	Stereo sound SEPMAG	F
ST2290	Balanced audio output 2-channels (mono)	F
Z50	Time elapsed counter	F
Other options and customer specifications: on request.		
<i>N = extendable by user or service engineer, F = factory installation only, * = only with camera, advised/installed by Steenbeck</i>		



Weight: 160 kg.
Measurement in mm.

More than 60 years of film table precision



Keizersveld 31
5803 AM Venray (Holland)
Email: info@steenbeck.com

Tel.: + 31 (0) 478 630300
Fax: + 31 (0) 478 690007
www.steenbeck.com

Specifications are subject to change without notice. Images are an example.